

# COOLREF LLC.

COOLREF, LLC. is a refrigeration manufacturing company located in Houston, Texas. It was founded by the talented refrigeration engineers, who are Luis Bugarin and Thanh Nguyen. They are both passionate and both have many years of experience in the refrigeration industry. Luis Bugarin is an owner of REF EXPERTS and Thanh Nguyen is an owner of TN COOLER that offer commercial/industrial HVAC/R installation and services in Dallas and Houston area. COOLREF was established with desire of providing breakthrough solutions for manufacturing high-performance refrigeration systems.

Our list of products includes refrigeration system racks, NSF certified Freezer/Cooler Doors, and refrigeration accessories. Our engineer team works directly with customers to understand needs and suggest solutions. The products are carefully manufactured and inspected to ensure the delivery of highest quality. These are our company's core values that define our reputation in the market.

Contact us today for a quote on your next project!

COOLREF - a team you can trust.



**Refrigeration Manufacturing Company**

**CR COOLREF**

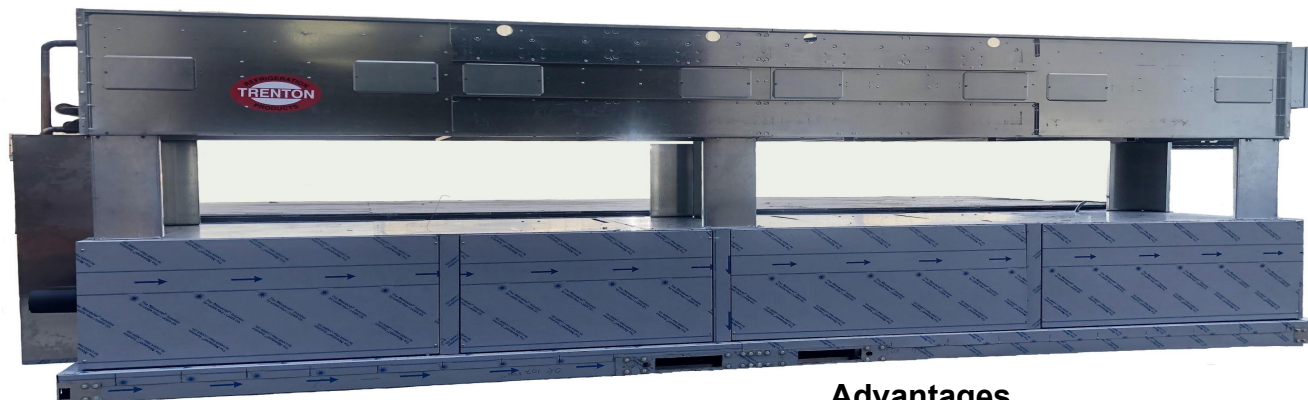
COOLREF LLC.

12130 Antoine Dr., Suite B2, Houston TX 77066

832-387-9533

[www.cool-ref.com](http://www.cool-ref.com)

# 1. FLEX Refrigeration System Rack



## Advantages

- Remote monitoring of system performance
- Digitally modulated compressor
- Energy efficiency
- Less maintenance
- Outdoor use (custom)
- Well-structured & lightweight frame
- Ease for service
- Space efficiency
- Tailored for your project with specific compressors, valve and control features.
- Price: from \$60,000



Item	Temperature Application	Capacity	Main Components
FLEX A	Low	Capacity: from 20 hp	+ Compressor: Copeland Emerson + Condenser: Trenton
FLEX B	Medium		
FLEX Combination	Low and Medium		



## 2. FIX Refrigeration System

Capacity: 5 - 20 HP (custom)

Price: from \$10,000

Main components:

compressor, oil separator, oil receiver, condenser, and evaporator coil

Temperature application: low and medium

### **Advantages**

- Affordable cost
- Energy efficiency
- Less maintenance
- Well-structured
- Lightweight frame
- Ease for service
- Space efficiency
- Fast turnaround



### **Why COOLREF Refrigeration System?**

COOLREF provides a breakthrough solution for commercial refrigeration systems. With the highest quality components, manufacturing techniques and leak testing, our refrigeration systems are ensured to deliver reliable performance over years. They also help to lower energy consumption when compared to using multiple condensing units. These systems can be customized to meet the customer requirements with fast turnaround time.

### 3. Custom Freezer/Cooler Door

#### a) Swing door

Size (H) X (W): (77" to 86") X (30" to 60")

Material: stainless steel/aluminum/  
white aluminum

Automatic close

Price: from \$1,500

#### b) Slide door

Size (H) x (W): (86" to 120") X (60" to 120")

Material: stainless steel/aluminum/  
white aluminum

Price: from \$3,500



We are proud that our freezer/cooler doors are National Sanitation Foundation (NSF) approved since June 2020.  
They are certified to safely use in food/restaurant industry.





## 4. Freezer Curtain

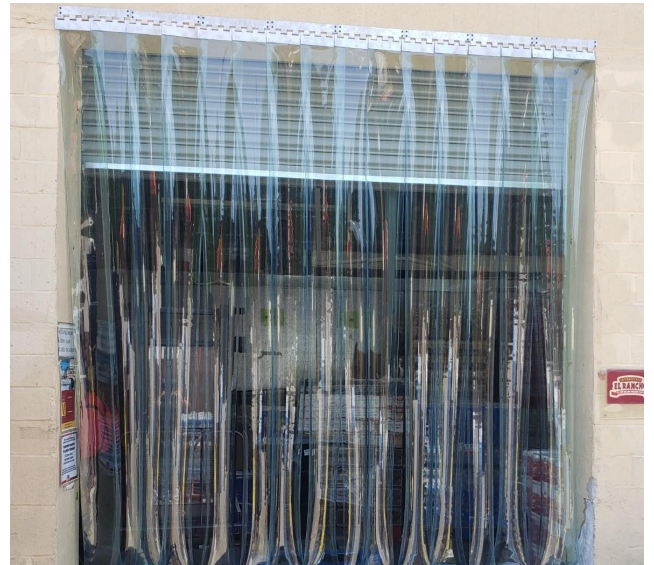
Color: clear

Material: vinyl

Standard strip length: 8 ft (custom 10ft available)

Advantage: easy to install, for both external and internal doors, suitable for pedestrian and motorized traffic

Price: \$40/ linear ft



## 5. Roof Jack

Material: Galvanized steel 24 GA

Size (L x W x H): 14.5 x 14.5 x 8.5 in

Advantage: economical, corrosion resistant, and easy to install

Price: \$22/set

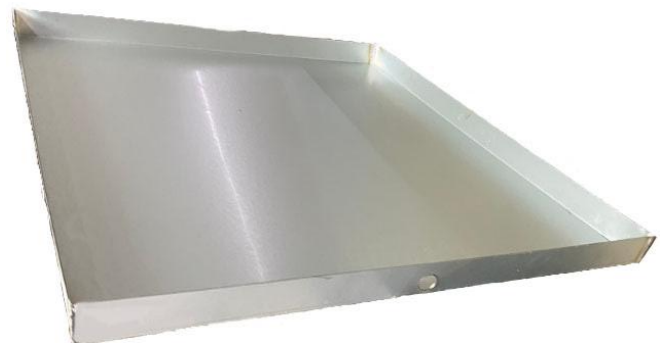


## 6. Emergency Drain Pan

Material: Galvanized steel 24 GA

Advantage: corrosion resistant and easy to install

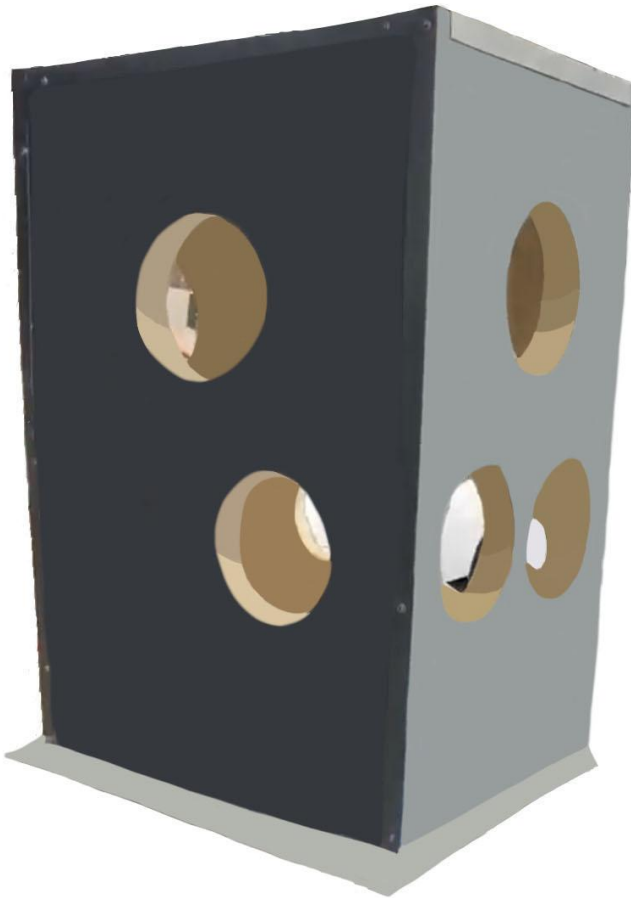
L	x	W (in)	Price (\$)
32"	x	36"	15
16"	x	56"	15
16"	x	44"	15
31"	x	48"	18
32"	x	60"	25
31"	x	65"	30



## 7. Metal Plenum

Material: Galvanized steel 26 GA

Advantage: good insulated coverage, high R-value, mold and bacteria resistant and no harmful particles produced to the consumers.



L	x	W	x	H (in)	Price (\$)
16	x	19 $\frac{3}{4}$	x	36	64
12 $\frac{1}{2}$	x	16	x	36	65
13	x	19 $\frac{3}{4}$	x	36	67
16	x	19 $\frac{3}{4}$	x	36	67
13	x	19 $\frac{3}{4}$	x	36	67
16	x	19 $\frac{3}{4}$	x	36	67
16	x	22 $\frac{3}{4}$	x	36	69
16	x	21	x	36	69
19 $\frac{1}{2}$	x	19 $\frac{3}{4}$	x	36	71
19	x	23	x	36	71
19 $\frac{1}{2}$	x	19 $\frac{3}{4}$	x	36	71
21	x	23	x	36	74
21	x	23	x	36	74
21	x	33 $\frac{3}{4}$	x	36	80
21	x	33 $\frac{3}{4}$	x	36	80
21 $\frac{1}{4}$	x	42 $\frac{5}{8}$	x	36	88